



THE FIBER OPTICS OF LYME DISEASE

MARTIN C HART, DC, NASM-CES, TFT/EFT

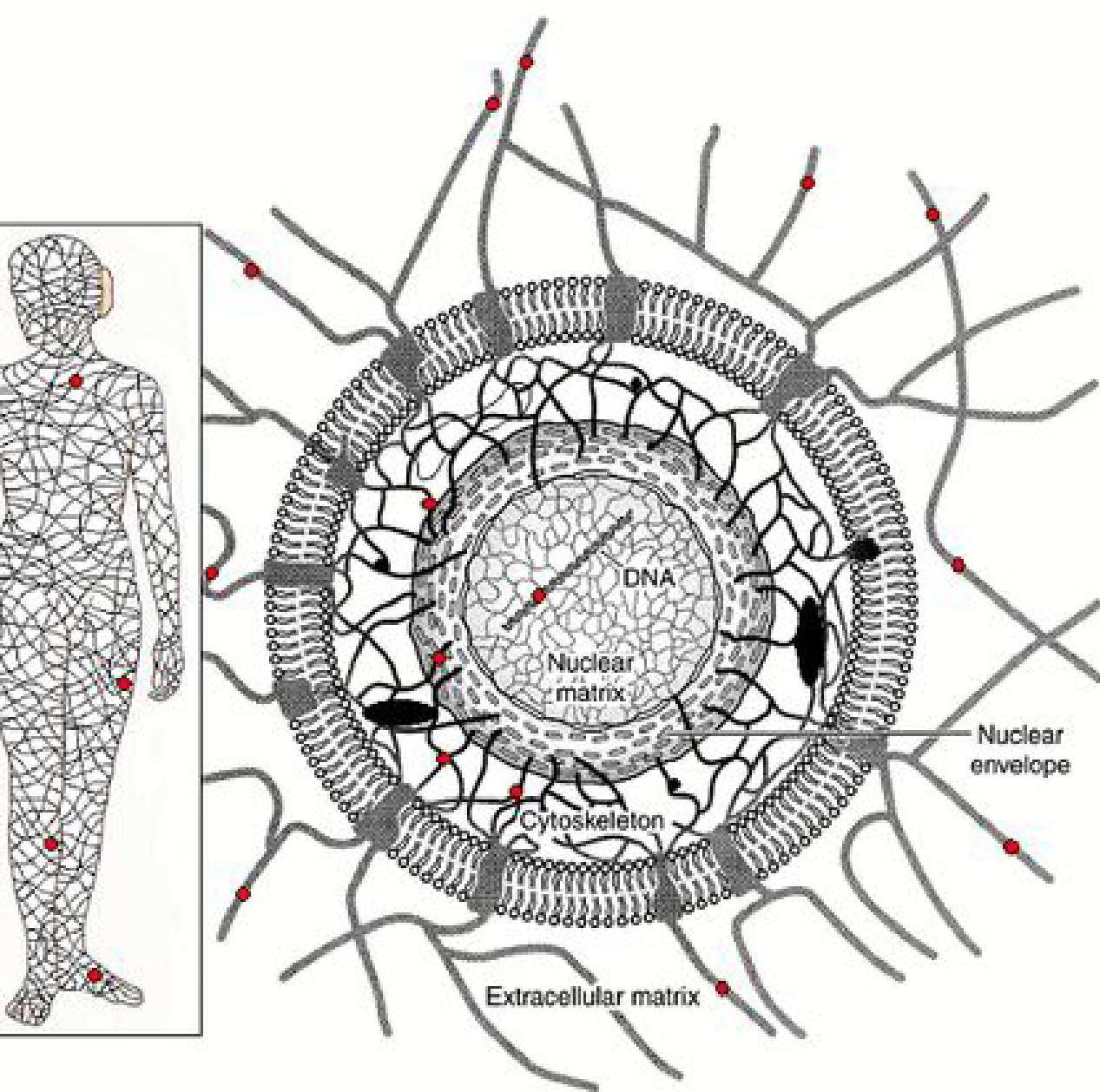
DISCUSSION TOPICS

- The Human Fiber Optic Network
- Light and the Human Body
- DNA
- Lyme as a Light Disruptor
- Assessing and Treating the Light Fields of the Body



WHAT MAKES INTERNET SPEEDS SO FAST?

- Fiber-optic cables and light to carry the data.
- Utilizing your computer and the internet, you have vast amounts of knowledge at your disposal.
- What if there was a system that allowed us to tap in the that same type of knowledge regarding the human body?
- *It turns out, there is....*



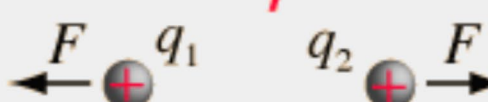
THE HUMAN FIBER OPTIC NETWORK

- Just like we use fiber-optics for TV, internet, and telephone service now, our body has a fiber-optic network.
- This network spreads throughout the entire body which allows all cells and their DNA to communicate with each other directly utilizing biophotons.
- This network can be known as the Crystalline Matrix of the body, which connects the extracellular matrix (connective tissue and fascia-crystalline in nature) with the cytoskeleton of every cell and nucleus (DNA material).
- This Crystalline Matrix, connecting us head to toe, inside out, is carrying the biophotonic informational and energetic emissions of each and every cell.

LIGHT AND THE HUMAN BODY

- To understand light and the human body, you need a very easy, gentle, brief physics lesson.
- There are four fundamental forces in the universe, one of them being electromagnetism.
- Electromagnetic force is what holds atoms together, it gives most physical objects their properties, governs all chemical processes.
- “The electromagnetic force is responsible for practically all phenomena one encounters in daily life above the nuclear scale, with the exception of gravity.”

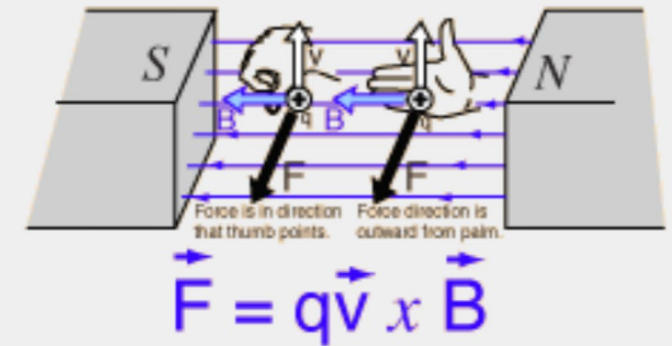
Electric

$$F = \frac{kq_1q_2}{r^2}$$


Like charges repel

The diagram shows two positive charges, labeled q_1 and q_2 , represented as red circles with a plus sign. Force vectors F are shown as arrows pointing away from each charge, indicating repulsion.

Magnetic

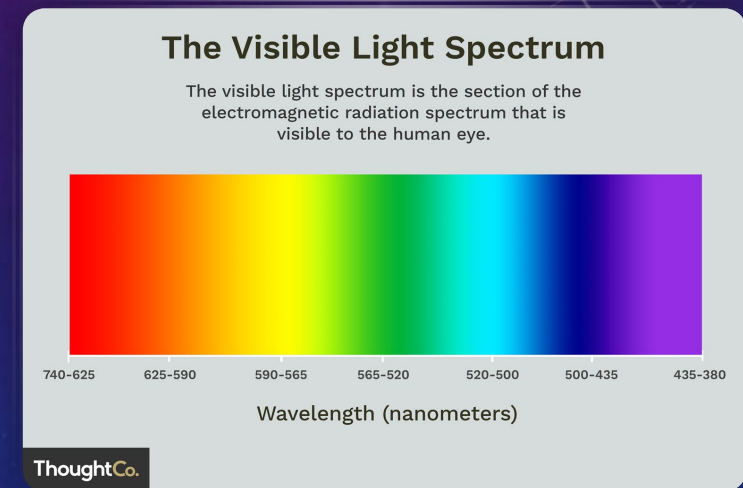


LIGHT AND THE HUMAN BODY

MANY PEOPLE LEARNED THAT VISIBLE LIGHT IS ON THE ELECTROMAGNETIC SPECTRUM.

SOME KNOW THAT A PHOTON IS A LIGHT PARTICLE.

THE ENTIRE ELECTROMAGNETIC SPECTRUM USES PHOTONS AS ITS MEANS OF INTERACTION. MAKING THE FULL SPECTRUM ESSENTIALLY LIGHT





LIGHT AND THE HUMAN BODY

- It is light that holds the human body together.
- It is light that is the major mode of communication in the human body.
- It is light that controls all the chemical processes of the human body.

“We know today that man, essentially, is a being of light.” Prof. Fitz Albert Popp



BIOPHOTONS AND THE HUMAN BODY

- DNA is the body's main biophoton emitter. It transmits, receives, and stores information in the form of biophotons. (Bischof 1992, Horowitz 2004)
- DNA is like a beacon, broadcasting the organizing field of the body via light.

LYME AS A LIGHT DISRUPTOR

- Lyme spirochetes (borrelia) are living organisms that use light in a similar fashion as humans:
 - To communicate with each other.
 - To form communities
 - To find food
 - To evade danger (IE avoid treatment)
 - To change shape (cyst form), form bio-films, and to morph antigens.





LYME AS A LIGHT DISRUPTOR

- Lyme is a collagen consumer, meaning it eats our connective tissue (Lyme Arthritis).
- Collagen makes up a large portion of the crystalline matrix (fiber optic network).
- You could think of this as rats eating your powerlines, it's destructive in many ways.
 - IF you can't get power to your house, it affects everything: heating, cooling, food, internet, phone, etc.
- Disrupting our bodies communication field also affects **EVERYTHING**.

ASSESSING-
TREATING THE
LIGHT FIELDS
OF THE BODY

Bio-Spectral Emissions
Sequencing

NeuroPhotonic Therapy

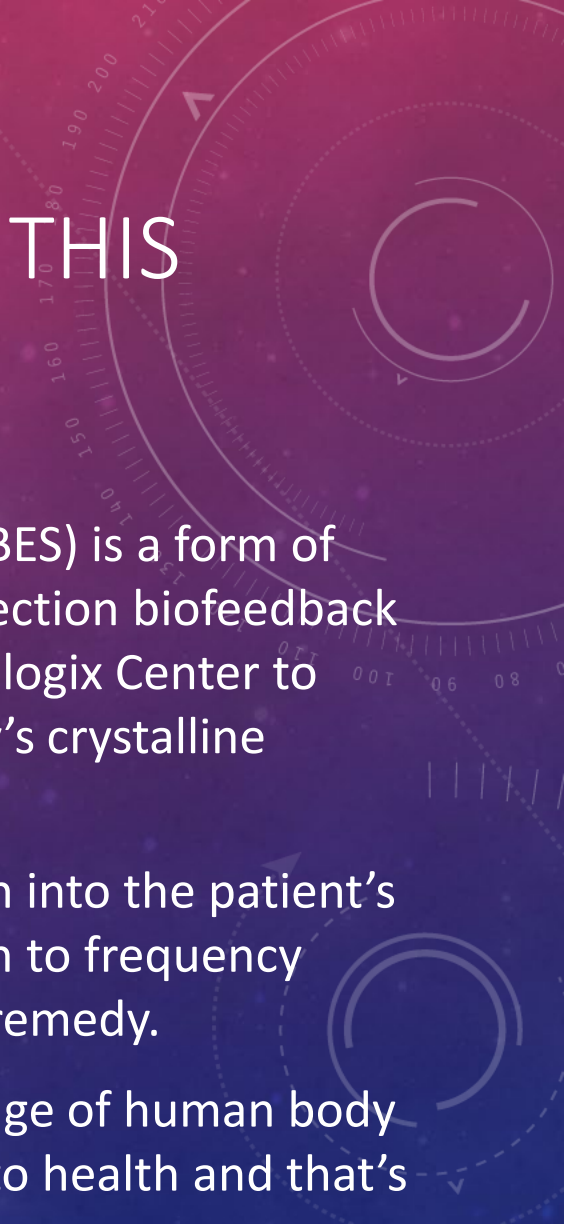
Clearing Lyme Disease

Healing the Crystalline
Matrix



HOW CAN WE TAP INTO THIS INFORMATION FIELD?

- Bio-Spectral Emissions Sequencing™ (BES) is a form of adjunctive-diagnostic and treatment selection biofeedback testing that allows the doctors at the Biologix Center to gain valuable data from the human body's crystalline matrix.
- It gives the doctors real-time information into the patient's condition and aids in treatment selection to frequency match the patient with the appropriate remedy.
- Imagine tapping into the stored knowledge of human body to aid in restoring the human condition to health and that's the real opportunity with BES.



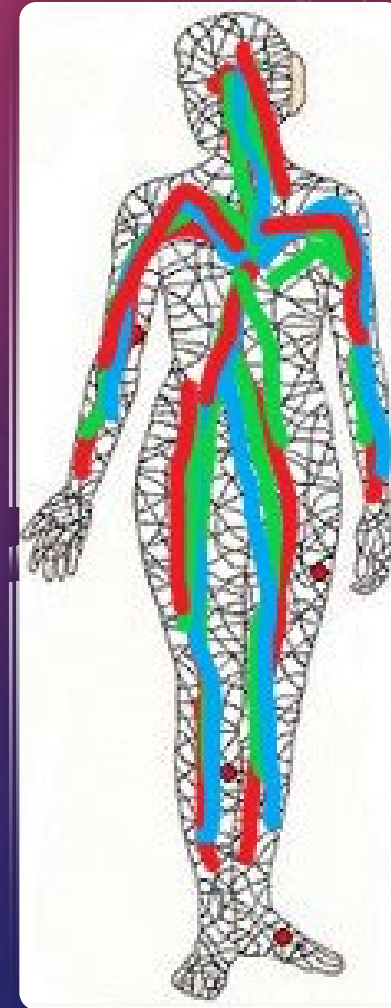
ASSESSING AND TREATING THE BODY'S LIGHT FIELD

- As we have seen, the human body has a light-field that carries data from every cell in the human body, including our DNA.
- We can tap into this field using Bio-Spectral Emissions Sequencing to assess dysfunction and support the body in dealing with the issues that are inhibiting health and healing.
- BES allows us to frequency-match treatments and remedies to the patient's light field and their crystalline matrix.
- This becomes vital when patients are dealing with Lyme Disease, which affects the entire body, multiple organ systems, has many co-infections, toxins, and interacts with each person individually.
- Instead of using a cookie cutter protocol, we can assess the data within your light-field to understand what's driving your issues.



NEUROPHOTONIC THERAPY

- NPT was developed by Dr. David A. Jernigan to facilitate restoring the optimum integrity of biophotonic transmissions through the body's crystalline matrix.
- Like running a diagnostic on your fiber-optic internet connection and then optimizing its function.
- Light in the body is more than just communication and organization. It is also a factor in energy creation and acts as nutrient.
- NPT in conjunction with BES, allows clinicians to assess your body's light field and restore communication throughout the crystalline matrix.

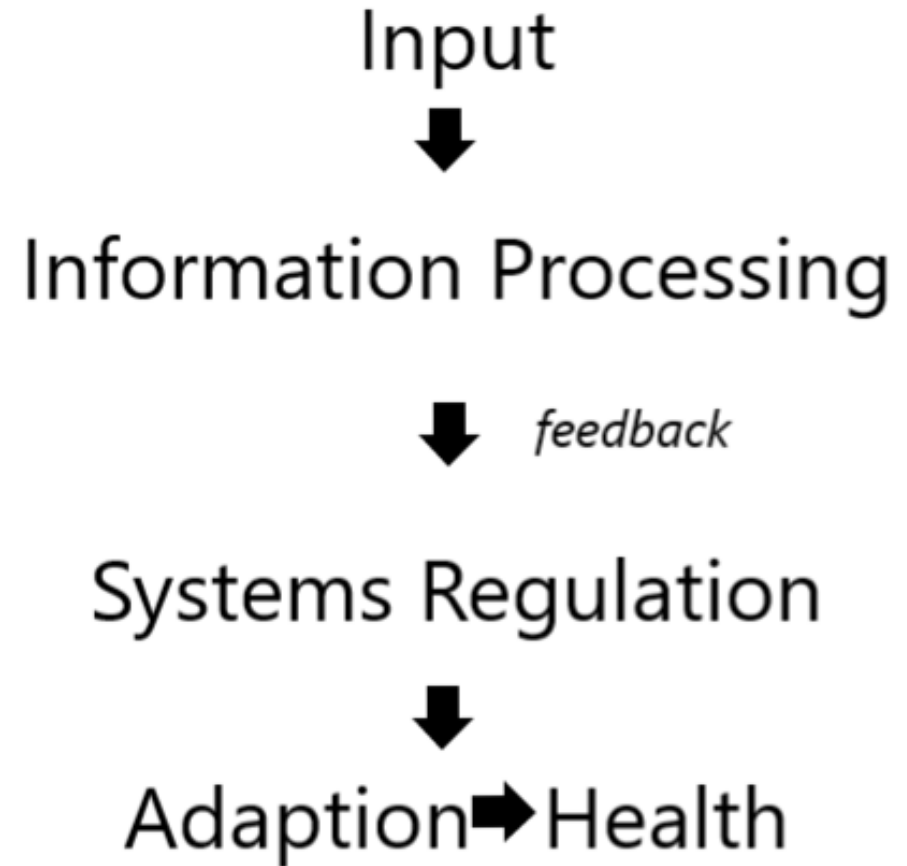


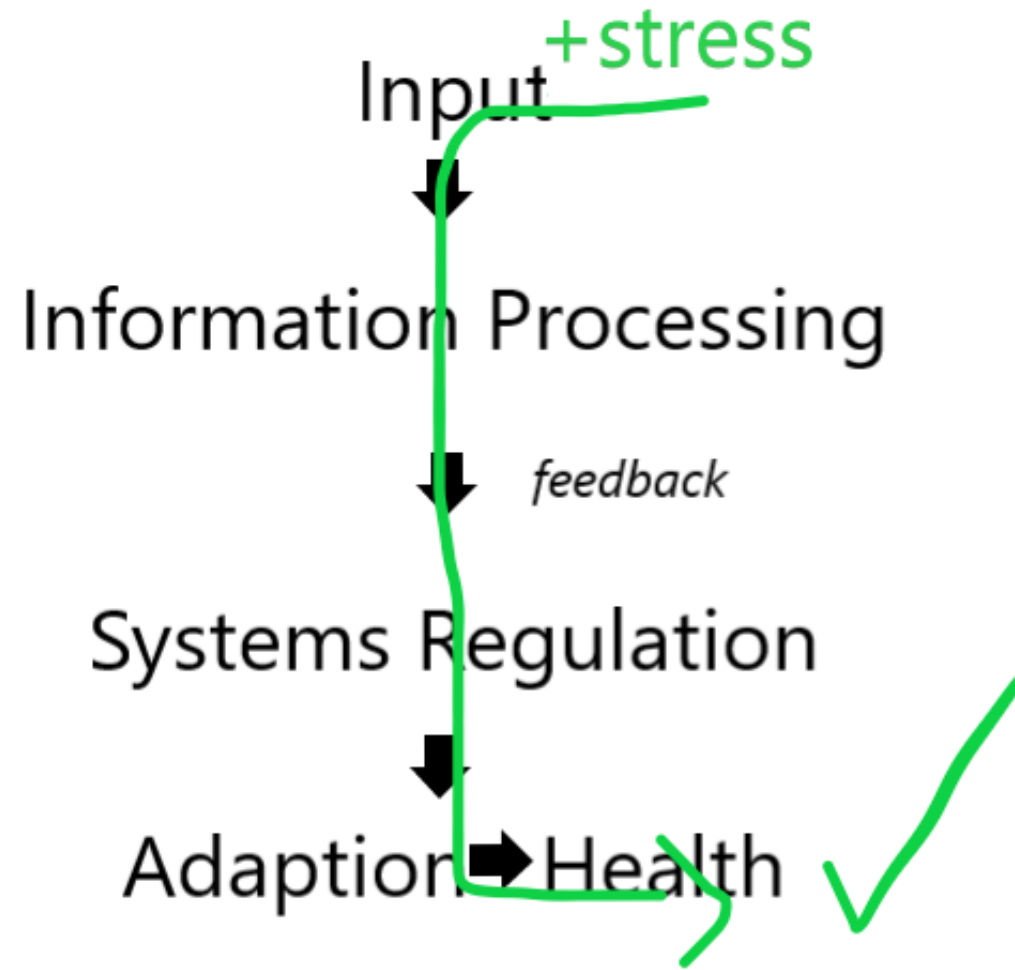


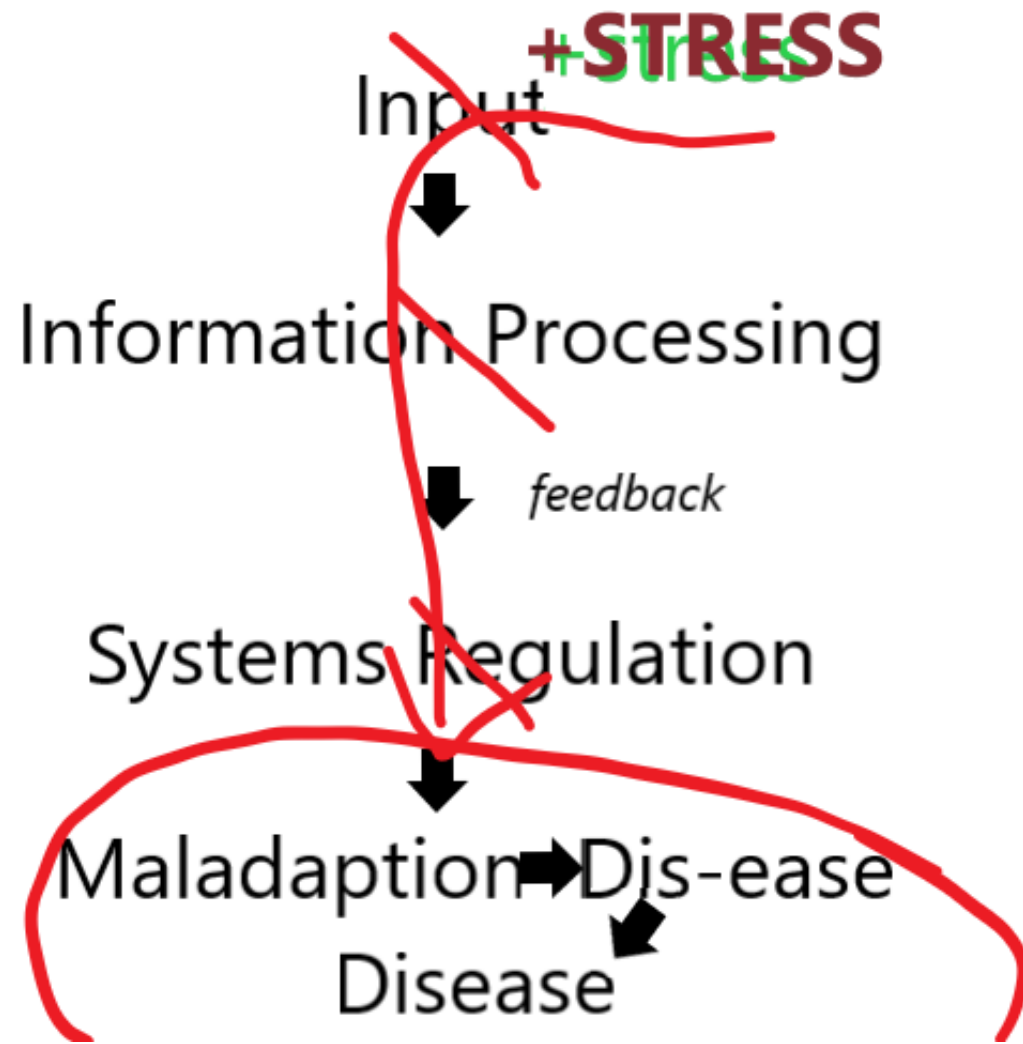
CLEARING LYME DISEASE

- If rats are eating your power lines, you must get rid of the rats.
- -Rat Traps (Anti-microbials, herbs, etc)
- -House Cats (Rebuilding and supporting the immune system)
- -Remove food sources (dietary changes)
- -Eliminate entry points (Restore the terrain).
- -Clean-up the rat droppings (anti-inflammatories)

BIOLOGICAL MEDICINE FLOW CHART







HEALING THE CRYSTALLINE MATRIX

Once the rats have left, it's time to repair the damage.

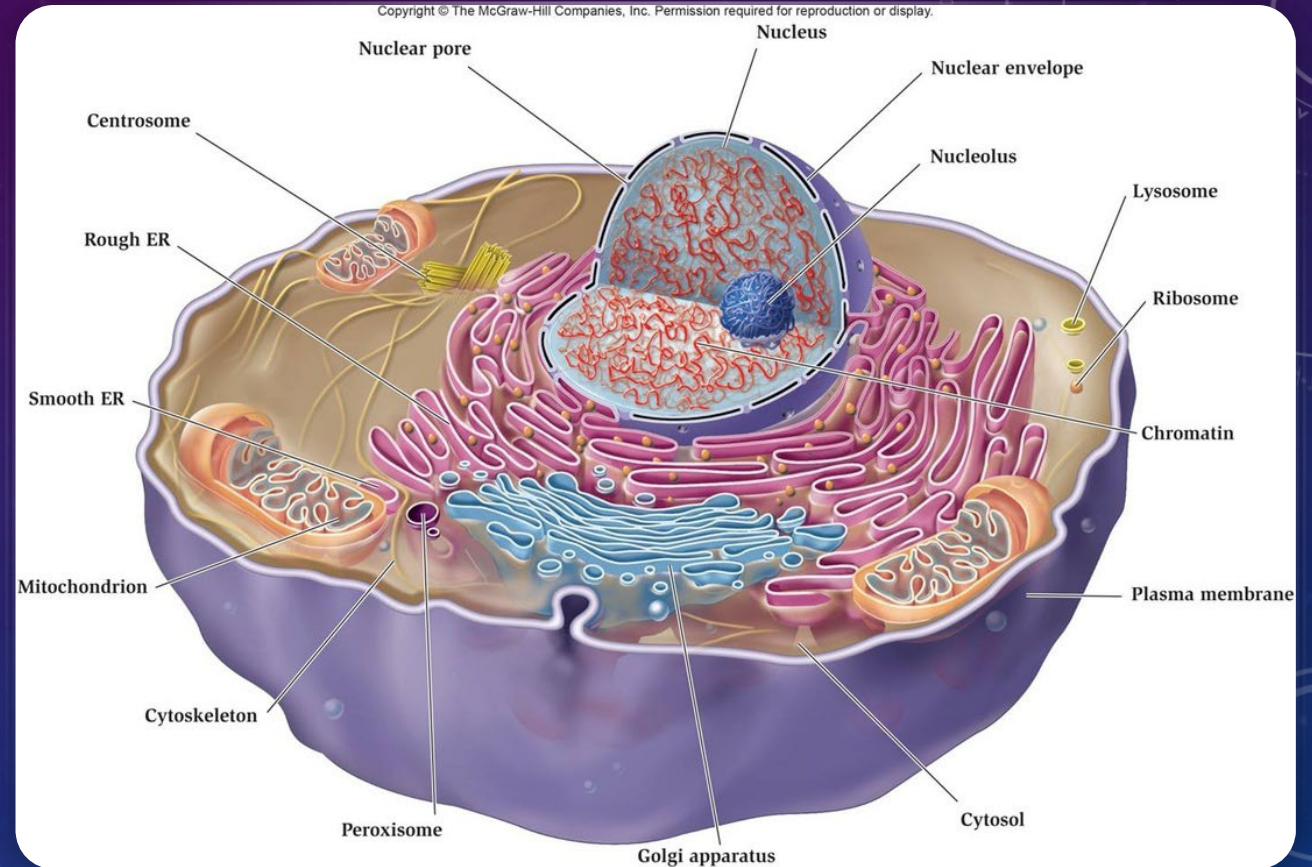
With Lyme Disease, you want to support the restoration of any damaged tissue but for this lecture we will focus on the connective tissue, cell membranes, and DNA as part of the Crystalline Matrix.

CONNECTIVE TISSUES

- Silica, boron, manganese, Vitamin C, zinc, copper, electrolytes (ECM) and collagen peptides.
- Glucosamine, chondroitin, MSM, aloe vera
- Structured water
- HBOT
- Manual therapies
- Laser and other frequency-based treatments
- Magnets

CELL MEMBRANES

- Healthy fats
 - Omega-3
 - Phospholipids
 - Cholesterol
- Eliminate toxic fats and trans fat.
- Structured water.



DNA

Antioxidants

Support proper Methylation

B-vitamins

Zinc

Sodium Butyrate

Curcumin

Berberine

Quercetin

QUESTIONS?



**MARION
INSTITUTE**



Biologix Center
FOR OPTIMUM HEALTH