

Meeting Minutes
Emergency Response to COVID-19
May 8 @ 3pm

Please fill out the survey!

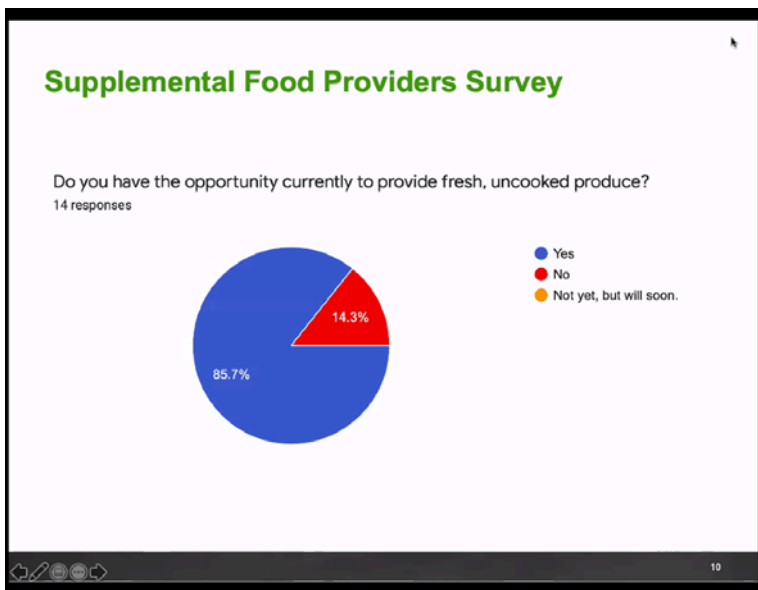
- Focused on supplemental food needs – supply, aggregation, storage, distribution, etc.

Holly F:

- We have had 14 responses to the survey so far – Thank You!

Supplemental Food Providers Survey - Response

1. Positive Action Against Chemical Addiction, Inc
2. Business Innovation Center
3. The Family Pantry-Damien's Place
4. Salvation Army Church Food Pantry - Soup Kitchen
5. La Rhonda's Catering
6. Catholic Social Services - Solanus Casey Food Pantry
7. Round the Bend Farm
8. Good Shepherd's Table and Food Pantry
9. Christ The Rock
10. Citizens for Citizens Inc.
11. Martha's Pantry at Grace Food Pantry
12. Angels Anonymous Food Pantry
13. Catholic Community of Central Fall River
14. Our Daily Bread Mansfield Food Pantry

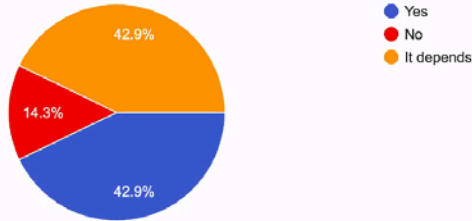




Supplemental Food Providers Survey

Are you interested in buying product from local farmers/fishers?

14 responses

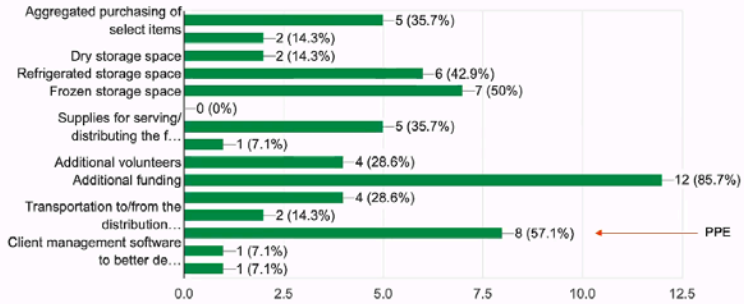


11

Supplemental Food Providers Survey

What would help you to run your organization's supplementary food services better?

14 responses



12

-PPE would be useful (Uway could help on this)

Supplemental Food Providers Survey

Do you have any excess capacity, equipment, or other resource to offer to others? (e.g. refrigerated truck, warehouse capacity)?

12 responses

Business Innovation Center

Our cafe space can be a distribution center and we have some food prep capacity and storage.

La Rhonda's Catering

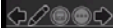
Knowledge on utilizing resources to reduce food waste.

Round the Bend Farm

We have commercial kitchen space, storage capacity, we are very creative and used to sharing

Angels Anonymous Food Pantry

We just have a few commercial coolers and freezers



13

Positive Action Against Chemical Addiction, Inc

Transportation enterprise that I have been utilizing, reallocated grant resources.

Liz Wiley(Marion Institute):

- What's they next steps?

Karen (SEMAP):

- One aspect of going through food hub and needs assessment, is what are the needs of the farmers?
- We want to find the right mix of services, meeting the needs of the region
- There is a survey out to farmers to gather info on many agricultural categories

Mike Botelho (MDAR):

- MDAR has initiated a survey on an impact assessment on what farms and aggregators expect might have or could happen in labor, storage, etc.
 - o This is to support two initiatives around Food Security with a focus on Ag production
 - Working on MEFAP funding for potential local purchasing (State money)
 - Second, the establishment of a Covid-19 Response fund for agriculture to fill the gaps between federal funding and local needs.
 - Could be for PPE's, infrastructure upgrades, labor assistance, equipment, etc.
 - o There are still some issues with Farmers Markets being opened, this is in process as well as labor processes on farm
 - o Hoping to have traction for farm and food laborers to get 'second in line' testing behind first responders and medical staff
 - o Paying attention to a potential of excess in product that can't move in summer/fall season and creating a response

- Mass Emergency Food Assistance program
 - o Funding earmarked into MDAR
 - o Broad parameters for local procurement
 - o Would love to see local purchasing increased, including direct to farm sales
 - o Trying to keep MDAR work specific on agriculture

Holly F:

- Greater Boston Food Bank is hoping to use more of the MEFAP funds for local purchasing from farmers.

Rob Shaheen (NB Food Service Department):

- Have distributed 107,000 meals so far
- Got accepted for 1000 boxes of veggies and 2000 boxes of dairy per week for families
- Finishing the regular produce bid
 - o Local foods procurement bid as well
 - Partnering with Boston public schools for this
- Planning for students to come back in the fall
 - o Probably will have a different structure
- Working to get menu improved with quality and local foods
- Rolling out the Fresh Fruit and Vegetable program

Mike B (MDAR):

- Working with Boston Public Schools currently to initiate the local procurement
 - o Market access component (audits and inspections, etc)
- Kendall Foundation funding this to get started

Diedre Healy (Umass Dartmouth):

- Moving along with the Food Finder project
 - o App to connect people to find nutritious food
 - o Database to locate food and how to access it
 - o Should be able to connect everyone to rescue food
 - o The biggest part is getting the data correct

Pam Kuechler (PACE):

- Did four pop ups this week, and could add more next week
- Supply has evened out
- Has a partnership with a local farm, and they will be getting fresh produce from them (USDA funds)

Barbara Cotton (Cape and Islands Red Cross):

- Have done a lot around blood services (please continue to give)
- Red Cross runs a food pantry out of Boston along with a mobile market
- Could take general requests around feeding and food
 - o Can help with distribution, transportation and packaging of meals
- With Shah and Lewis foundation, they were able to directly to serve neighborhoods in need
 - o Filling the over-capacity needs



- Will be distributing 50,000 masks partnered with FEMA
- Working with Tribes to get food boxes to isolated elders
 - o Please reach out for help if you need help with resources

Kim Smith (Fall River United Way):

- We help Feed Fall River program increased to 150 meals / week
 - o Hoping to expand, 150 on the waiting list
- Food distribution call on Mondays at 10am

Wendy Garf-Lipp:

- School system has partnered with Stop and Shop for cases of food to provide to families
 - o Included Blount Food and Gold Medal into the packages

Liz W:

- Cooks for Community program starting for over a hundred families
 - o Java House and ...?

Adele Sands (Bristol Agricultural High School):

- Will be having an auction for beef cattle soon
- Received an award for Green Schools which included the local food sourcing

Liz W:

- Has been talking with Andy Burns (Meatworks) to try to get more meat into the food pantries
 - o If anyone is interested in meat (1 animal brings 400 lbs of ground beef)
 - Will sell for around \$5 / pound
- Have the option of bringing down 4,400 gallons of milk

Karen:

- Dairy delivery (looking to distribute 25K gallons of milk in the region)
 - o At BC High, Private donations covered costs
 - o Took truckload of milk, processed at Hood plant to gallon containers
 - o And brought milk to BC High for free distribution
 - Funding was about \$5,000 for 4K gallons of milk
 - o We could send this to food pantries and have some for general community pickup

Liz W:

- For dairy order
 - o Storage is needed
 - o Who wants milk?
 - Message Liz if you are interested
- What would the turnaround time for a dairy delivery?
 - o Karen: we would have about a week's notice

Wendy Garf-Lipp:

- Holding a Compassion Retreat training

Peter Muise:

- Will check on with Liz for milk refrigeration
 - o Needs to know the size (pallets, weight, etc.)

Karen S (SEMAP):

- Dairy delivery storage:
 - o First have who wants it take it off the truck
 - o Second storage and pickup by community
 - o Third distribute to food banks

ADDENDUM: WEEKLY MEETING LOG-IN INFORMATION

Topic: Southcoast Food Policy Council COVID - Response Effort

Time: Apr 3, 2020 03:00 PM Eastern Time (US and Canada)

Every week on Fri, until May 29, 2020, 9 occurrence(s)

Please download and import the following iCalendar (.ics) files to your calendar system. Weekly:

https://zoom.us/meeting/vJUtdumppj4i5ivcY73HPfx0faHUZORxzA/ics?icsToken=98tyKuiprjoqG9yQuF_9Z7ItA4H9bvG1iyRHvKBkyOzNMyZLMgX3Htd4HYBnCvmB

Join Zoom Meeting

<https://zoom.us/j/110101858>

Meeting ID: 110 101 858

One tap mobile +19294362866,,110101858# US (New York)

Find your local number: <https://zoom.us/u/abvD8aAGc6>

SFPC RESOURCE LIST:

https://docs.google.com/spreadsheets/u/1/d/1MN7NJKRQf50G9f3ek7mJGYmgn0w6dwHnh3Hx0VBW_Q4/edit?usp=drive_web&oid=117774638526057657372